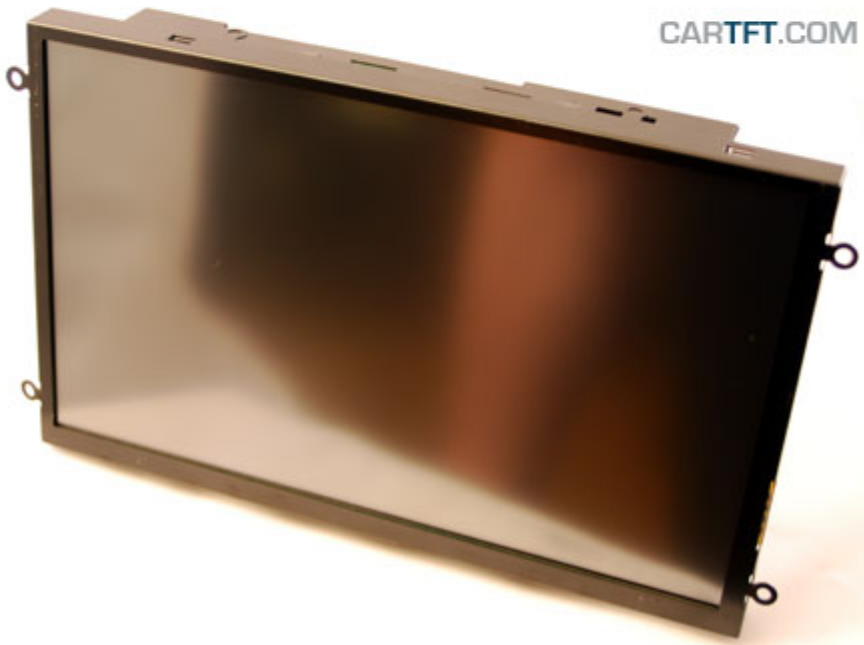


349.00 EUR  
incl. 19% VAT, plus [shipping](#)

- Open-Frame !
- Auto Power On !
- Auto-Dimmer !
- LED Backlight !

CARTFT.COM



**Support:**  [Dimensions](#) | [800x480 Driver \(Windows 7\)](#)

**Update (14.01.2014):** Now with LED-Backlight !

With the new Open-Frame TFT display-series from CarTFT you get back control : The ruggedized metal frame enables you a stable installation. The single modules (Mainboard, Touchscreen controller, Power inverter and button-frame) can be screwed off from the rear side and being positionated elsewhere. This way you can install the connector cables more easier and the display thickness shrinks also.

With the new Open-Frame TFT display-series from CarTFT you get back control : The ruggedized metal frame enables you a stable installation. The single modules (Mainboard, Touchscreen controller, Power inverter and button-frame) can be screwed off from the rear side and being positionated elsewhere. This way you can install the connector cables more easier and the display thickness shrinks also.

**Note :** This Open-Frame TFT display is an offer primarily meant for business and project customers. End consumers should only handle with unprotected electronic parts with appropriate experience.

**Possible additional options (starting from a MOQ of 20 units):**

- Speakers

- Different cable lengths
- Other display models/sizes
- Touchscreen RS232 instead of USB
- Other connector types
- [...] Ask us !

**Additional informations :**

With the touchscreen functionality you easily can control your PC. The brilliant VGA-display ensures a maximum readability and sharpness.

AC-Adapter for home usage and a car cigarette lighter adapter is included.

The CTF-1020-ML can be used with any PC/MAC with VGA- and USB port.

Driver-CD included, compatible with :

- Windows 95/98/ME/NT4/2000/XP/7/8/8.1/10
- XP Tablet PC Edition
- Windows CE 2.12, 3.0, .net
- Linux RedHat,Mandrake,..
- Macintosh OS 9.x, 10.x
- DOS,..

<b>Spezifications</b>	
Screen size	10.2" digital
Aspect Ratio	16:9 wide TFT screen
Dot Resolution	2400x480= 1,152,000 dots
Physical Resolution	800x480
Supported Resolutions	640x480-1920x1080
Color configuration	RGB stripe
Brightness	400 nits
Contrast	400:1
Operating temperature	-30°C to 85°C
Power input	DC 9-30V
Power consumption	max. 11W
Video system	2x Video inputs (PAL/NTSC) 1x VGA input
Dimensions	237.6 x 148.5 x 35.7 mm Display : 223.9 x 135.11 mm
Video input signal	1.0Vp-p, composite video
Features	Full function OSD control (english) Auto-Dimmer Auto Power On/Off
What is included ?	- 10.2" VGA Open-Frame Touchscreen TFT with Video-support
	- Power Adapter f. EU 230V
	- Cigarette Lighter Adapter
	- Touchscreen Driver-CD
	- Manual



Displays with [True-800x480-Support](#) achieve a pixel accurate view at 800x480@70Hz